

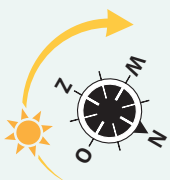
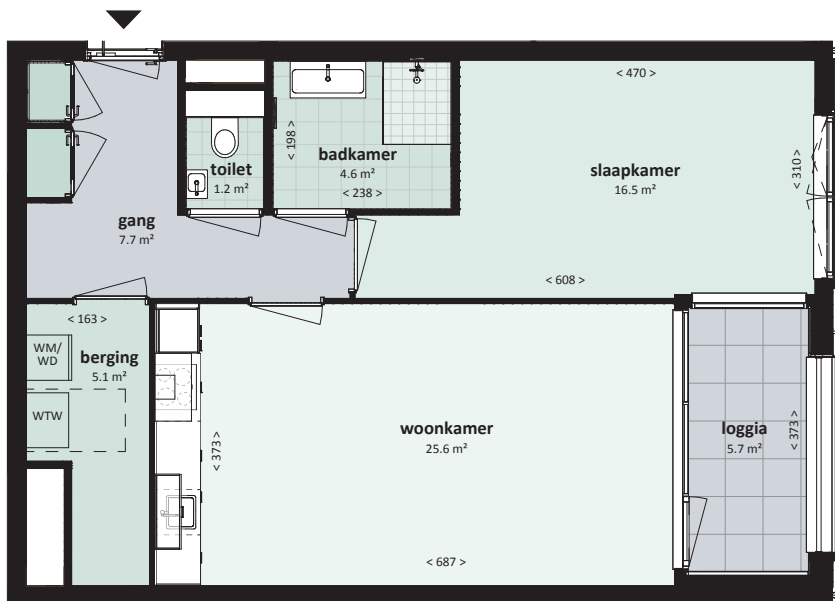
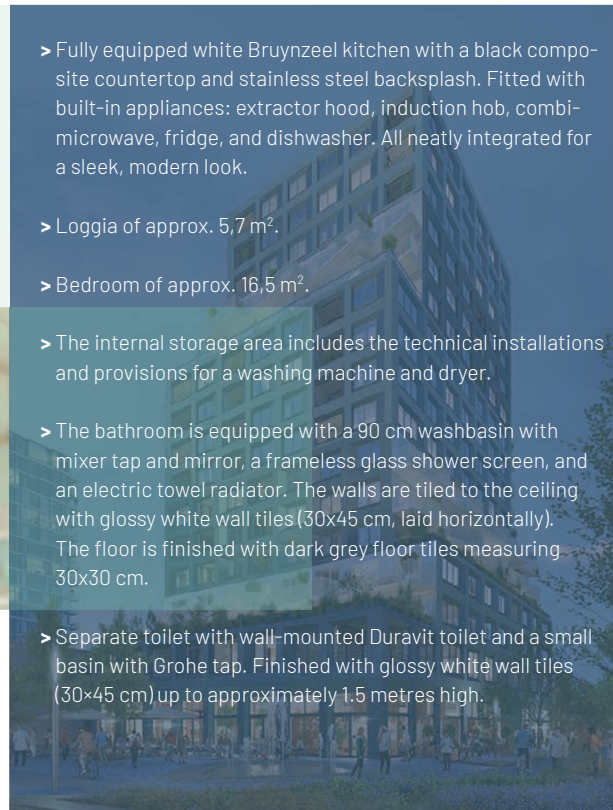
Type 21

- > Floor 3
- > Usable Floor Area (UFA) approx. 63,8 m²
- > 1 bedroom
- > loggia of 5,7 m²

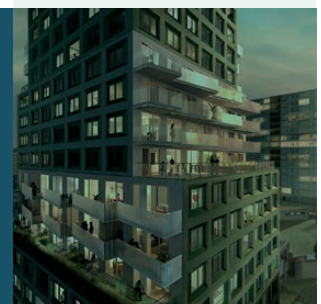
- > Fully equipped white Bruynzeel kitchen with a black composite countertop and stainless steel backsplash. Fitted with built-in appliances: extractor hood, induction hob, combi-microwave, fridge, and dishwasher. All neatly integrated for a sleek, modern look.
- > Loggia of approx. 5,7 m².
- > Bedroom of approx. 16,5 m².



- > The internal storage area includes the technical installations and provisions for a washing machine and dryer.
- > The bathroom is equipped with a 90 cm washbasin with mixer tap and mirror, a frameless glass shower screen, and an electric towel radiator. The walls are tiled to the ceiling with glossy white wall tiles (30x45 cm, laid horizontally). The floor is finished with dark grey floor tiles measuring 30x30 cm.
- > Separate toilet with wall-mounted Duravit toilet and a small basin with Grohe tap. Finished with glossy white wall tiles (30x45 cm) up to approximately 1.5 metres high.



02
THE ORCHARD
HUURAPPARTEMENTEN



Address:

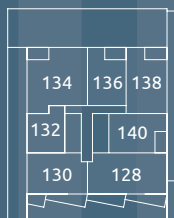
Floor 3 - Prinses Alexia Promenade 64



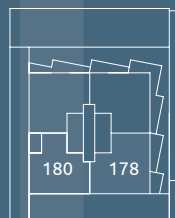
www.hureninorchard2.nl



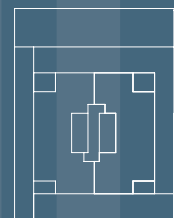
Floor 04



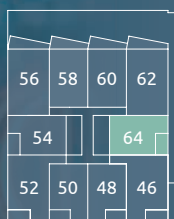
Floor 08



Floor 12



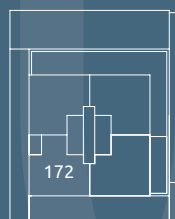
Floor 16



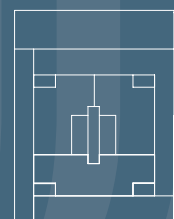
Floor 03



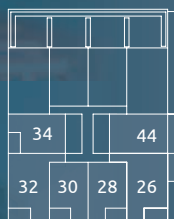
Floor 07



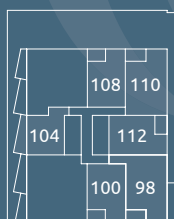
Floor 11



Floor 15



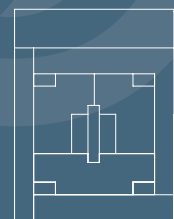
Floor 02



Floor 06



Floor 10



Floor 14



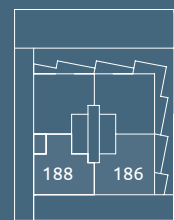
Floor 01



Floor 05



Floor 09



Floor 13

