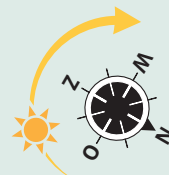
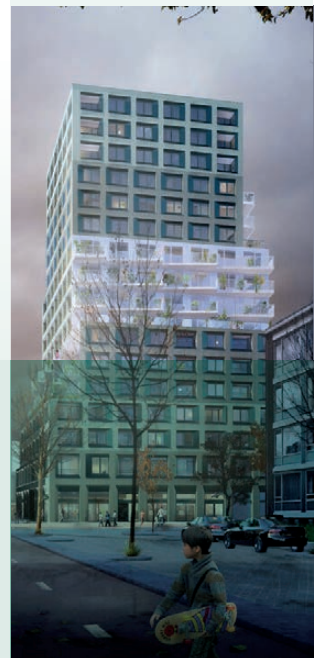
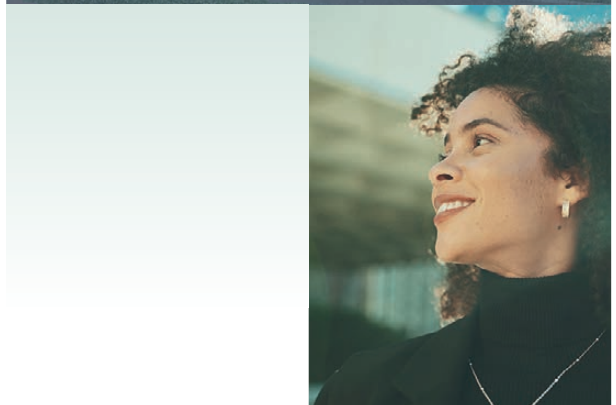
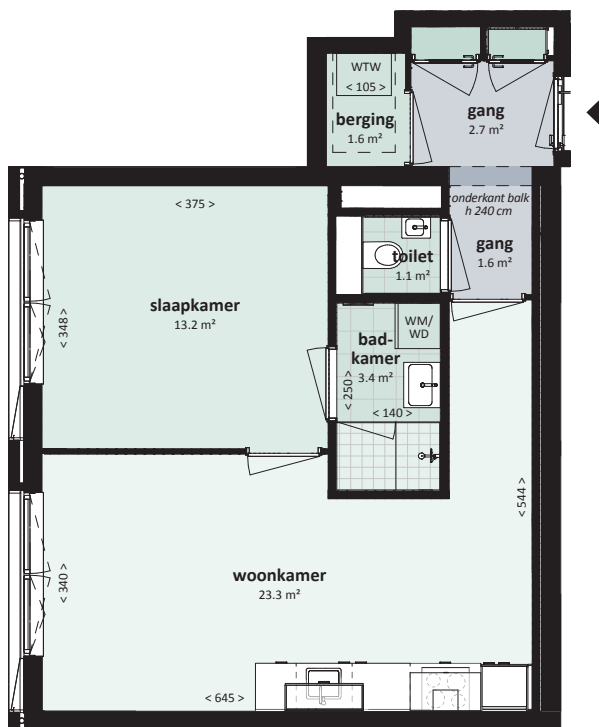


# Type 29

- > Floor 7, 8 and 9
- > Usable Floor Area (UFA) approx. 49,7 m<sup>2</sup>
- > 1 bedroom



- > Fully equipped white Bruynzeel kitchen with a black composite countertop and stainless steel backsplash. Fitted with built-in appliances: extractor hood, induction hob, combi-microwave, fridge, and dishwasher. All neatly integrated for a sleek, modern look.
- > Bedroom of approx. 13,2 m<sup>2</sup>.
- > A small internal storage room (1,6 m<sup>2</sup>) houses the technical installations and provides space for a washing machine and dryer. In addition, this apartment includes a separate storage unit of 6 m<sup>2</sup> on the first floor of the building.
- > The bathroom is equipped with a 60 cm washbasin with mixer tap and mirror, a frameless glass shower door, and an electric towel radiator. The walls are tiled to the ceiling with glossy white wall tiles (30x45 cm, laid horizontally). The floor is finished with dark grey floor tiles measuring 30x30 cm.
- > Separate toilet with wall-mounted Duravit toilet and a small basin with Grohe tap. Finished with glossy white wall tiles (30x45 cm) up to approximately 1,5 metres high.



**Address:**

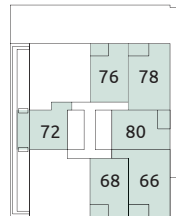
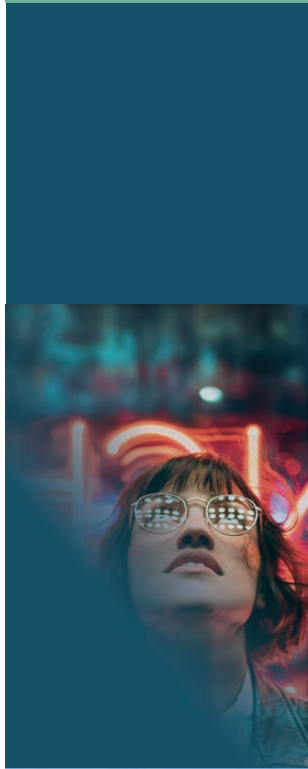
Floor 7 - Prinses Alexia Promenade 132

Floor 8 - Prinses Alexia Promenade 132

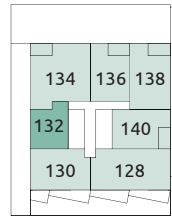
Floor 9 - Prinses Alexia Promenade 146



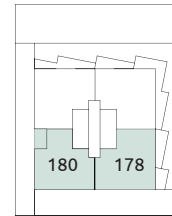
[www.hureninorchard2.nl](http://www.hureninorchard2.nl)



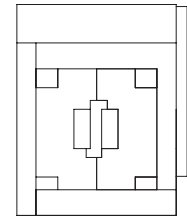
Floor 04



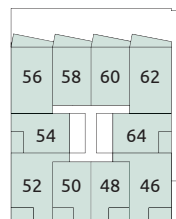
Floor 08



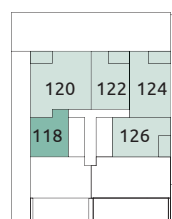
Floor 12



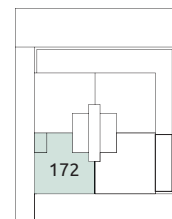
Floor 16



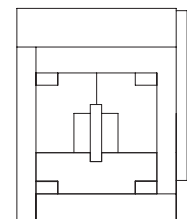
Floor 03



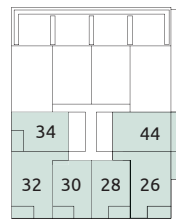
Floor 07



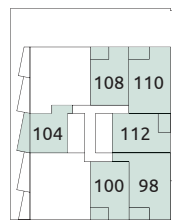
Floor 11



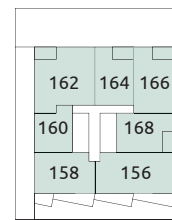
Floor 15



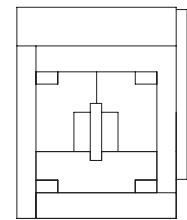
Floor 02



Floor 06



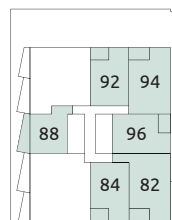
Floor 10



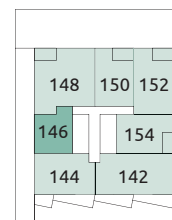
Floor 14



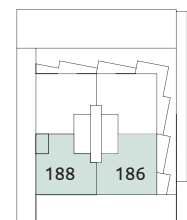
Floor 01



Floor 05



Floor 09



Floor 13

