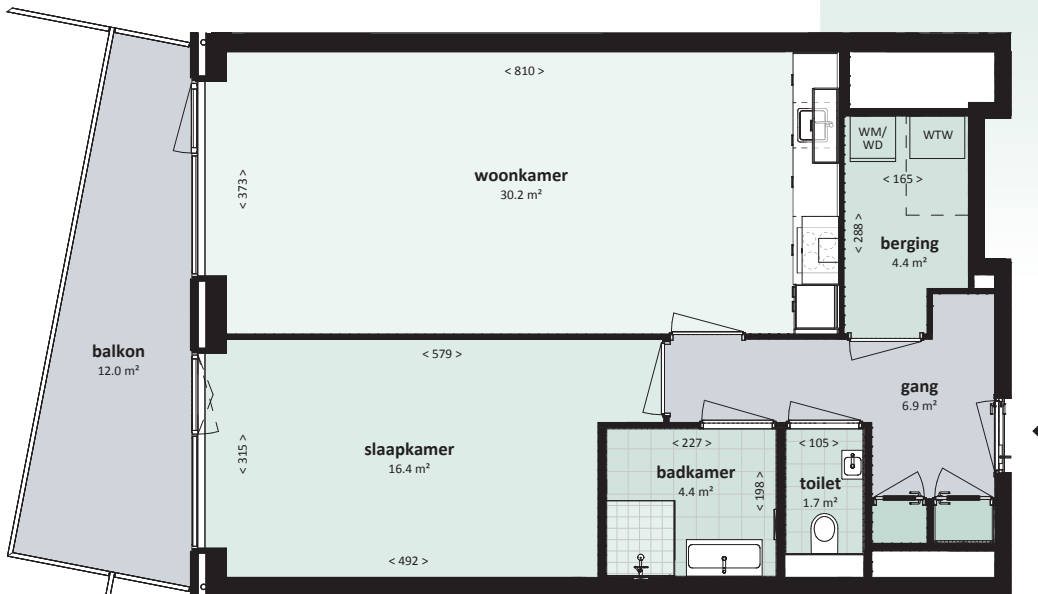
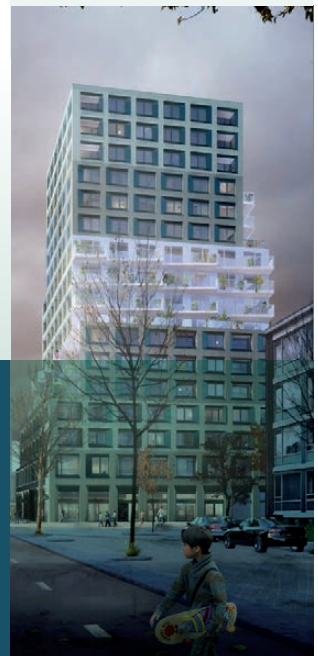
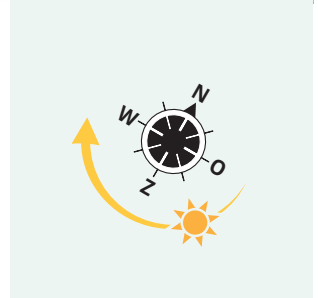
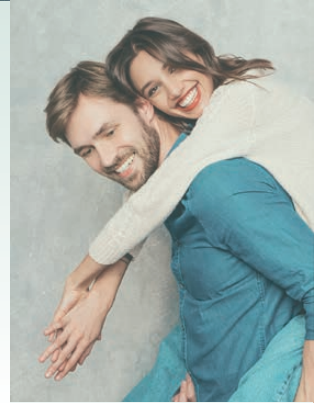
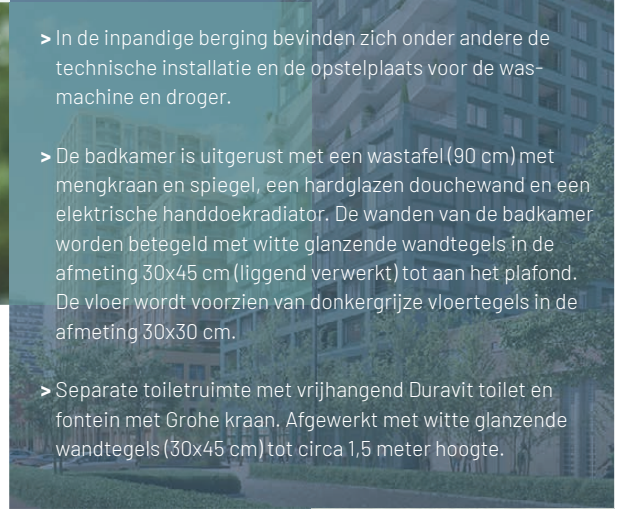


# Type 19

- > verdieping 3
- > gbo ca. 69,8 m<sup>2</sup>
- > 1 slaapkamer
- > balkon van 12,0 m<sup>2</sup>

- > Complete witte Bruynzeel keuken met zwart compositie werkblad en RVS spatscherm. Uitgerust met inbouwapparatuur: afzuigkap, inductiekookplaat, combimagnetron, koelkast en vaatwasser. Alles netjes ingebouwd voor een strakke, moderne uitstraling.
- > Balkon van ca. 12,0 m<sup>2</sup> (betonvloer).
- > Slaapkamer van ca. 16,4 m<sup>2</sup>.

- > In de inpanidige berging bevinden zich onder andere de technische installatie en de opstelplaats voor de wasmachine en droger.
- > De badkamer is uitgerust met een wastafel (90 cm) met mengkraan en spiegel, een hardglazen douchewand en een elektrische handdoekradiator. De wanden van de badkamer worden betegeld met witte glanzende wandtegels in de afmeting 30x45 cm (liggend verwerkt) tot aan het plafond. De vloer wordt voorzien van donkergrijze vloertegels in de afmeting 30x30 cm.
- > Separate toiletruimte met vrijhangend Duravit toilet en fontein met Grohe kraan. Afgewerkt met witte glanzende wandtegels (30x45 cm) tot circa 1,5 meter hoogte.

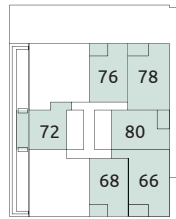
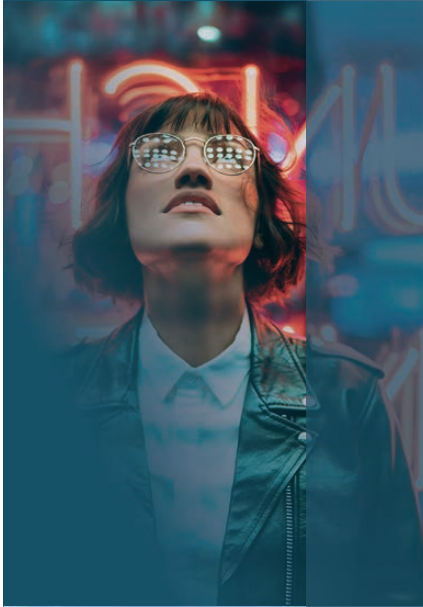


**Adres:**

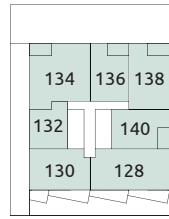
Verdieping 3 - Prinses Alexia Promenade 60



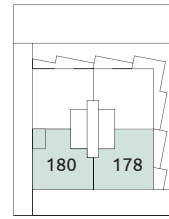
[www.hureninorchard2.nl](http://www.hureninorchard2.nl)



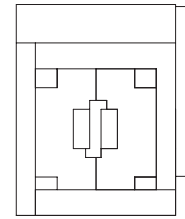
nivo 04



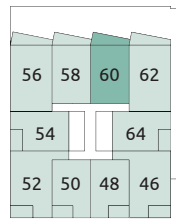
nivo 08



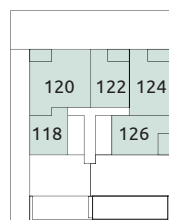
nivo 12



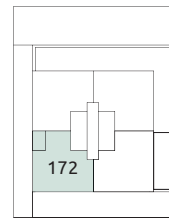
nivo 16



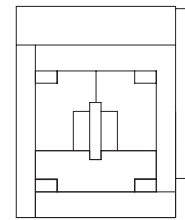
nivo 03



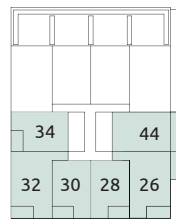
nivo 07



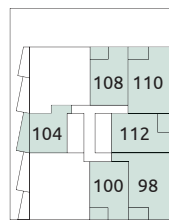
nivo 11



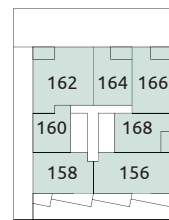
nivo 15



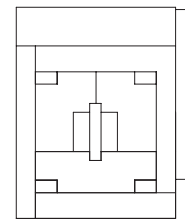
nivo 02



nivo 06



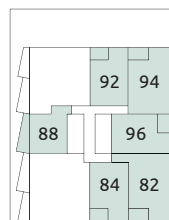
nivo 10



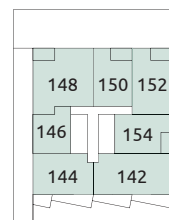
nivo 14



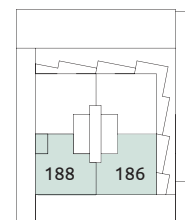
nivo 01



nivo 05



nivo 09



nivo 13

