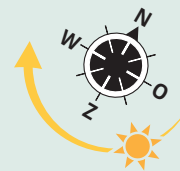
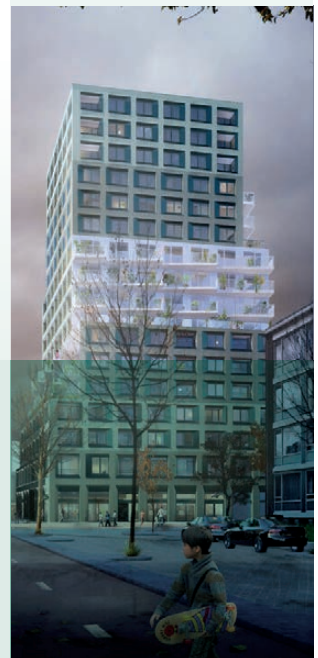
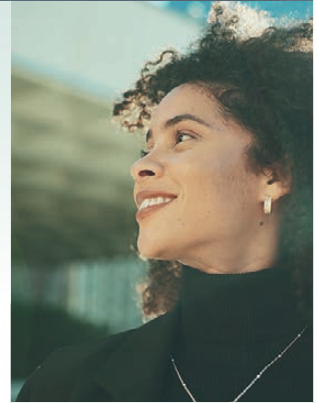
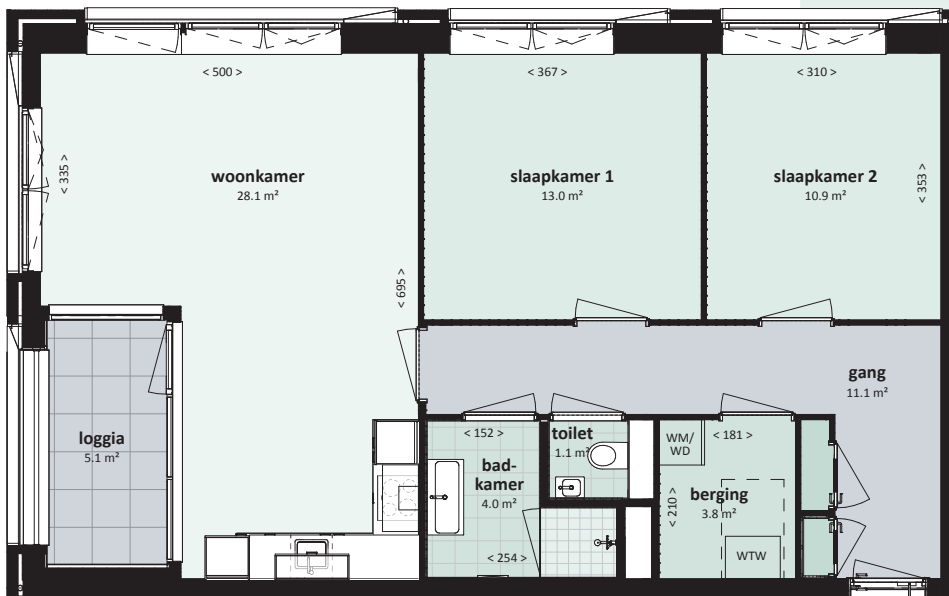
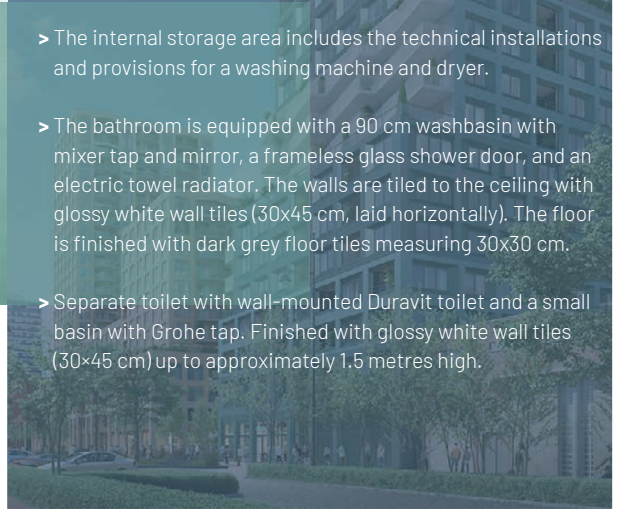


Type 26

- > Floor 4, 5 and 6
- > Usable Floor Area (UFA) approx. 75,5 m²
- > 2 bedrooms
- > loggia of 5,1 m²

- > Fully equipped white Bruynzeel kitchen with a black composite countertop and stainless steel backsplash. Includes built-in appliances: extractor hood, induction hob, combi-microwave, fridge-freezer combination, and dishwasher. All neatly integrated for a sleek, modern look.
- > Loggia of approx. 5,1 m².
- > Two bedrooms of approx. 13,0 en 10,9 m².
- > The internal storage area includes the technical installations and provisions for a washing machine and dryer.
- > The bathroom is equipped with a 90 cm washbasin with mixer tap and mirror, a frameless glass shower door, and an electric towel radiator. The walls are tiled to the ceiling with glossy white wall tiles (30x45 cm, laid horizontally). The floor is finished with dark grey floor tiles measuring 30x30 cm.
- > Separate toilet with wall-mounted Duravit toilet and a small basin with Grohe tap. Finished with glossy white wall tiles (30x45 cm) up to approximately 1.5 metres high.



Address:

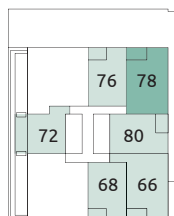
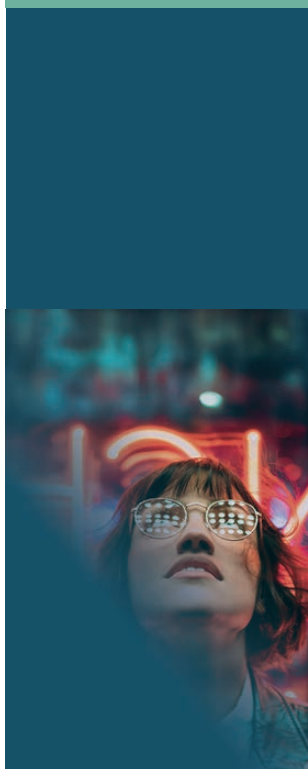
Floor 4 - Prinses Alexia Promenade 78

Floor 5 - Prinses Alexia Promenade 94

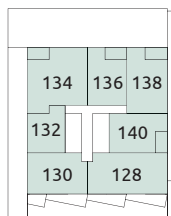
Floor 6 - Prinses Alexia Promenade 110



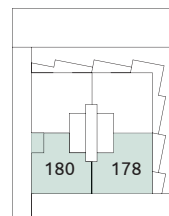
www.hureninorchard2.nl



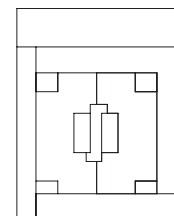
Floor 04



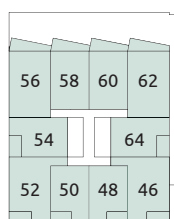
Floor 08



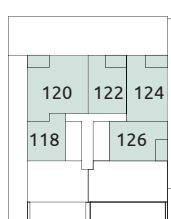
Floor 12



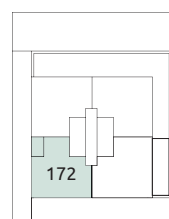
Floor 16



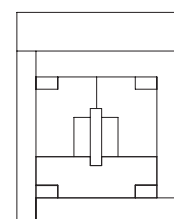
Floor 03



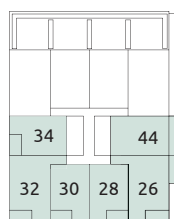
Floor 07



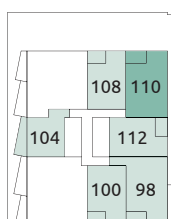
Floor 11



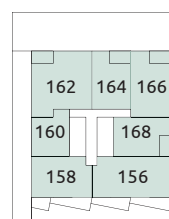
Floor 15



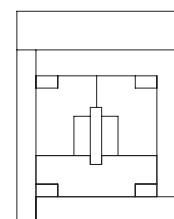
Floor 02



Floor 06



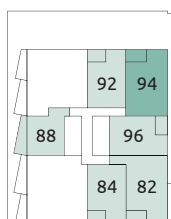
Floor 10



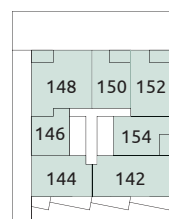
Floor 14



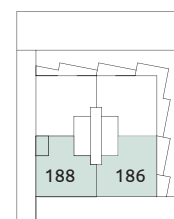
Floor 01



Floor 05



Floor 09



Floor 13

